



CA1000

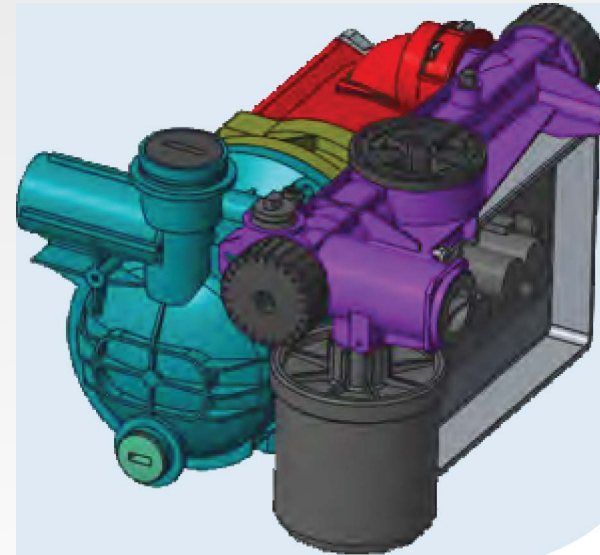
Booster Pump



CA 1000 Features

1. Permanent Magnet Technology

Permanent magnet motor, high efficiency, water-cooled design, quiet residential booster pump.



6. Safety Upgraded

Equipped with temperature sensor, at less than 5°C pump automatically starts to avoid freezing; with liquid higher than 60°C, pump automatically stops to protect motor.

2. Constant Pressure

Intelligent control, frequency variable, constant pressure, and energy efficient.

3. Simplicity

Dynamic smooth line design, replacing traditional industrial style, perfect for domestic use.

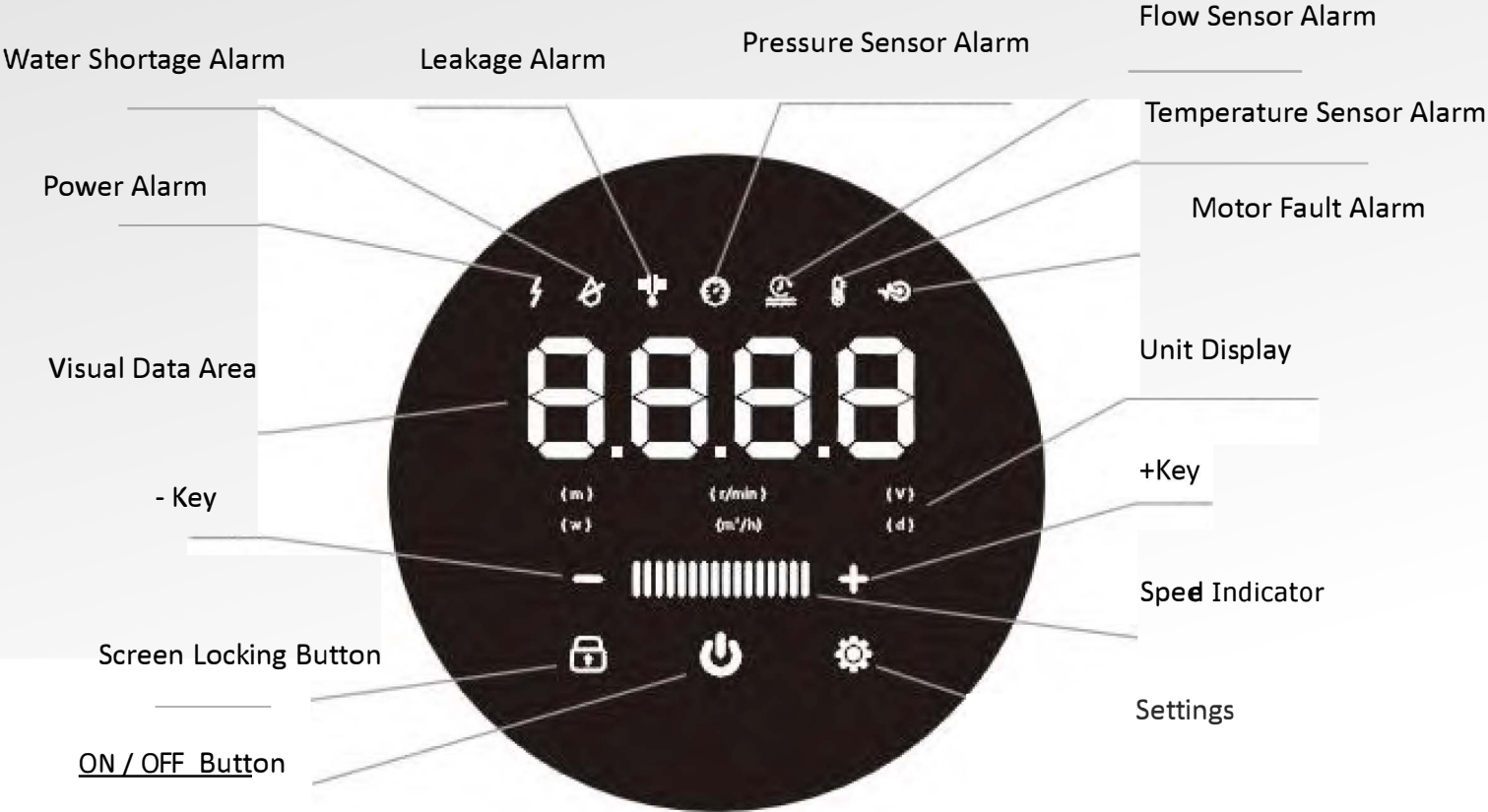
4. Touch Screen

LED touch screen, convenient operation.

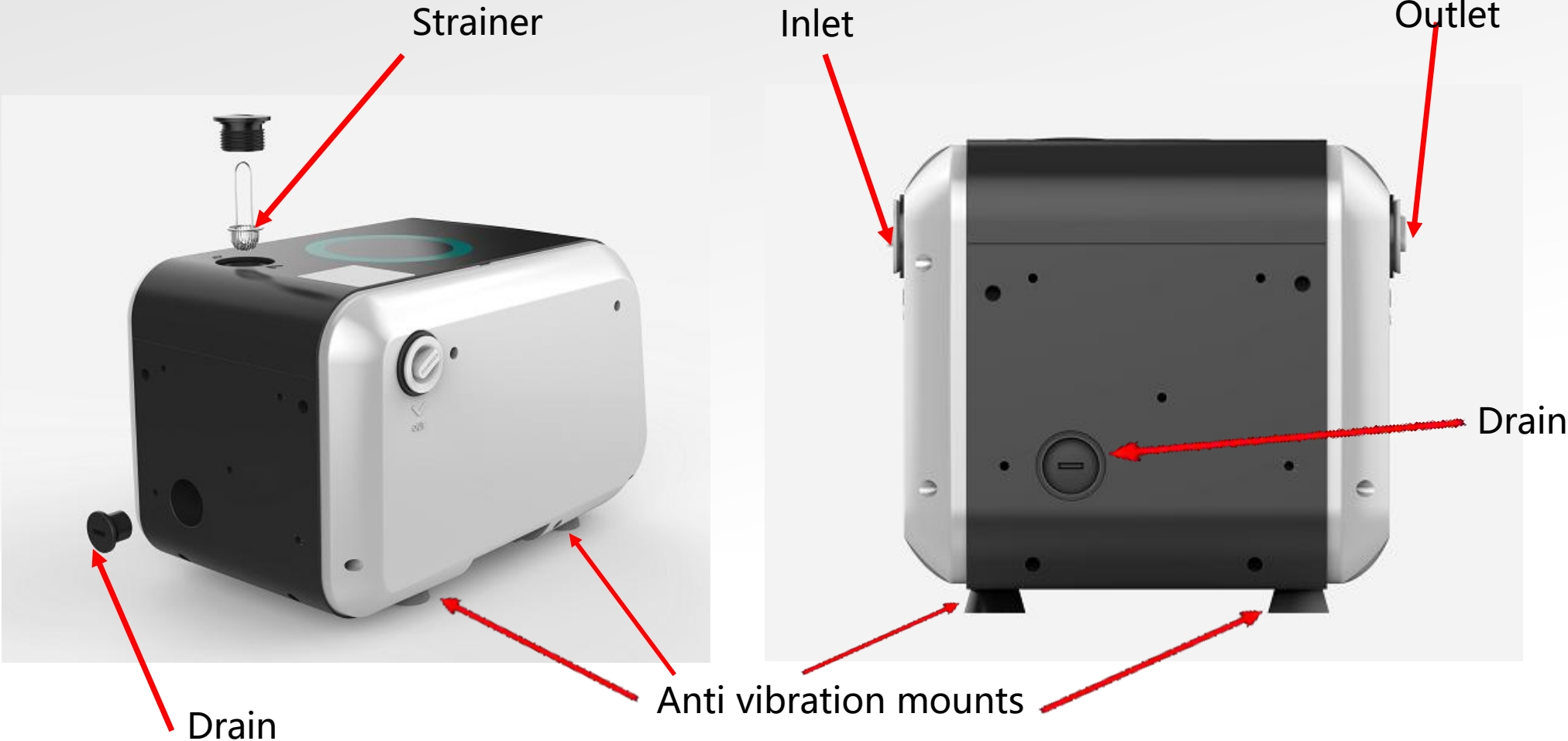
5. Dry-run Protection

Automatic stop on loss of supply, automatic start when supply returns..

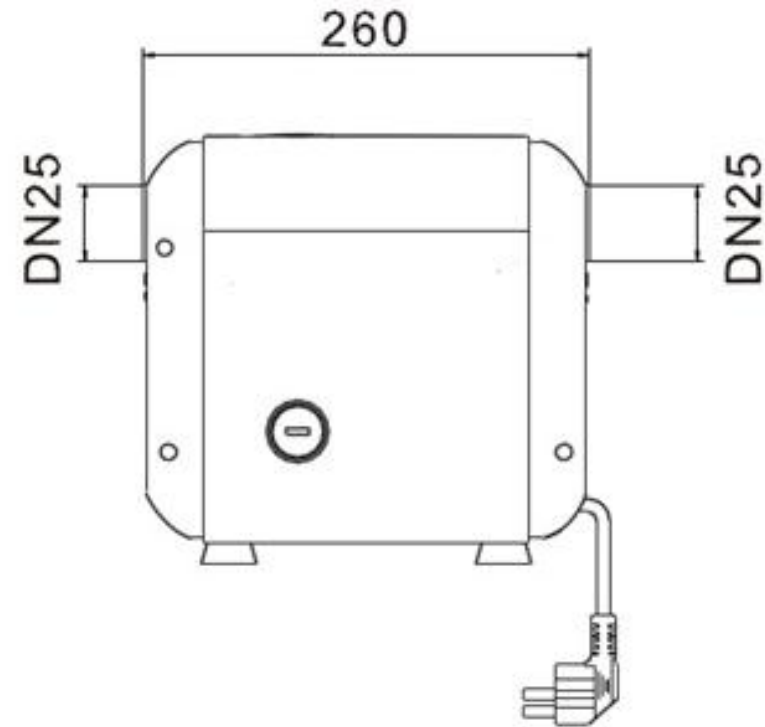
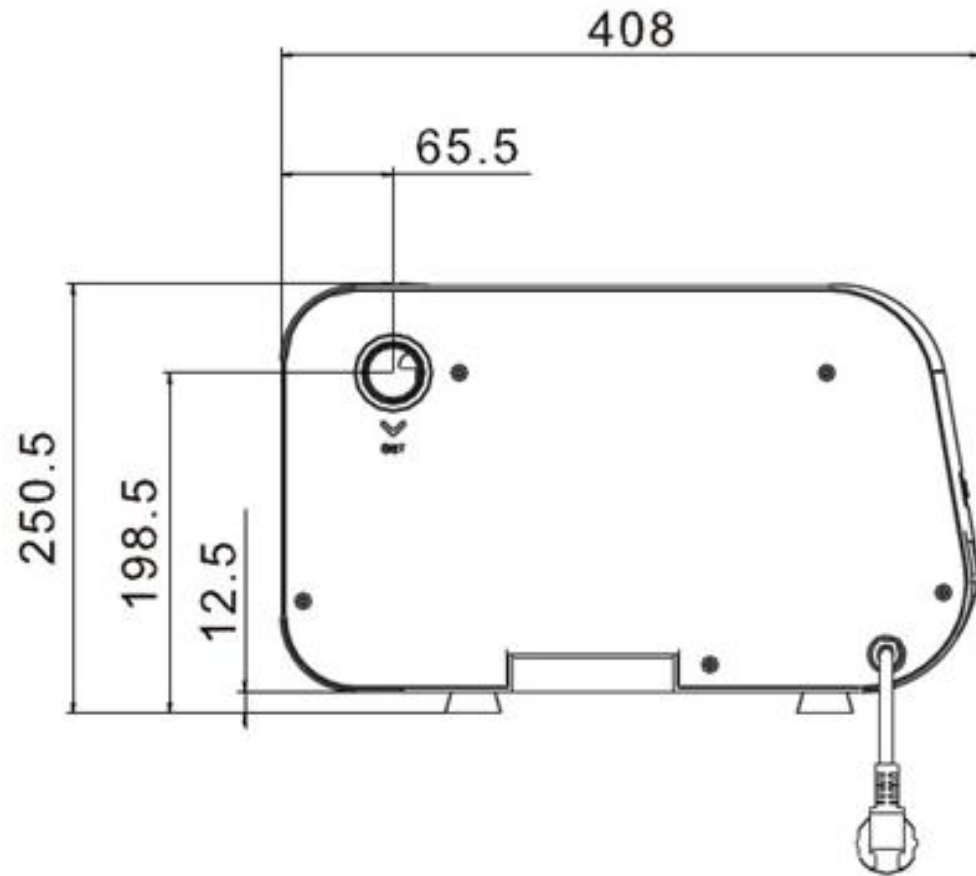
Touchscreen Instruction



Structure

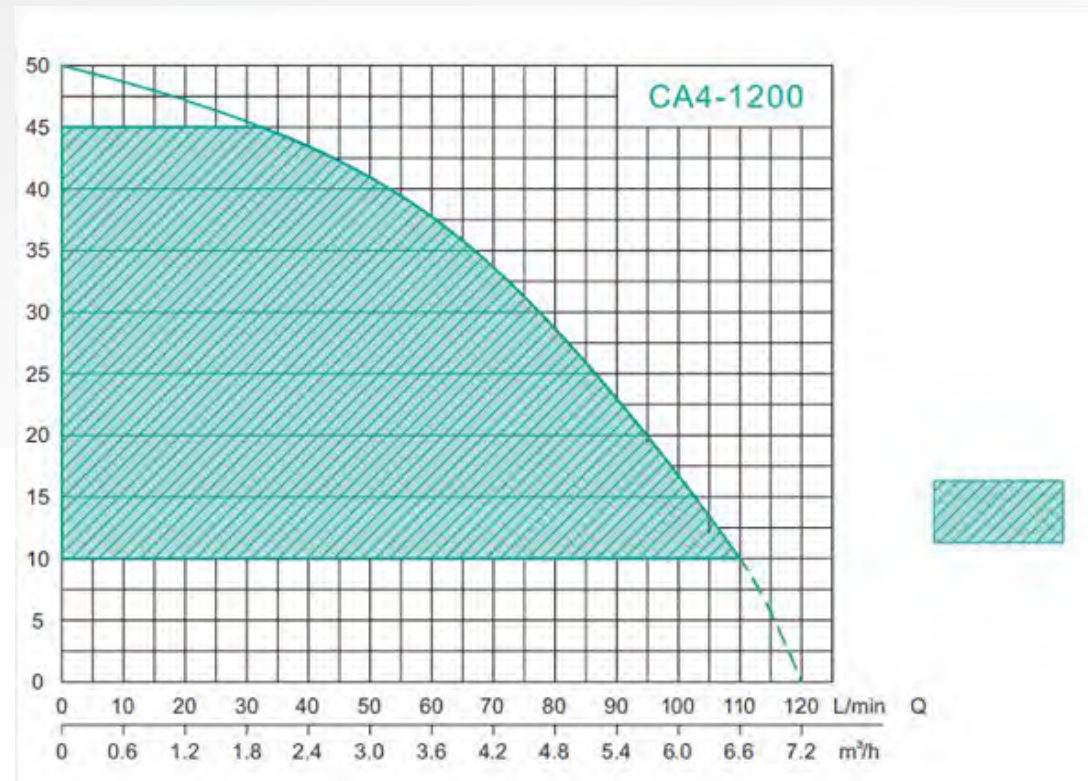


Dimension: 406mm*260mm*250.5mm



Performance

Model	Rated Power (W)	Max. Flow (m ³ /h)	Max. Head (m)	Rated Flow (m ³ /h)	Rated Head (m)	Max. Suction (m)	Inlet-outlet inch
CA1000	1000	7.2	50	4	35	6	1"



Data Sheet



CA1000

Technical	Rated voltage (V)	220-240V	
	Rated power (W)	1000	
	Rated current (A)	8	
	Rated flow (m ³ /h)	4	
	Rated head (m)	35	
	Max. flow (m ³ /h)	7.2	
	Max. head (m)	50	
	Enclosure class	IP 44	
Materials	Pump housing	Plastic	
	Impeller	Plastic	
	Motor	NdFeB magnetic steel	Small size motor, high efficiency
Installation	Range of ambient temperature (°C)	0-40	
	Size of inlet/outlet connection (inch)	1	
	Liquid temperature range (°C)	0-60	
	Installation Orientation	Horizontally or vertically	<ol style="list-style-type: none"> Horizontal inlet and outlet, convenient connection and less pipeline modification With removable filter screen, it can be cleaned without removing the pipeline
Function	Control Method	Pressure sensor and flow sensor	Ensures safe water shortage shutdown
	Antifreeze protection, overheat protection	Temperature sensor is used to monitor the water temperature change. When the water pump temp. is lower than 5 °C, it will start to operate to prevent the water pump from freezing damage. When the water temperature is higher than 60 °C, the machine would be stopped for protection.	
	Expert debugging mode	With expert debugging mode, it can modify water shortage protection, backlight time, sleep time, speed, leakage warning, etc	
	Touch panel	Touch panel, LED display, control freely and quickly	
Dimension	Net weight (KG)	10.5	
	Gross weight (KG)	12	
	Dimension (mm)	408×260×205	